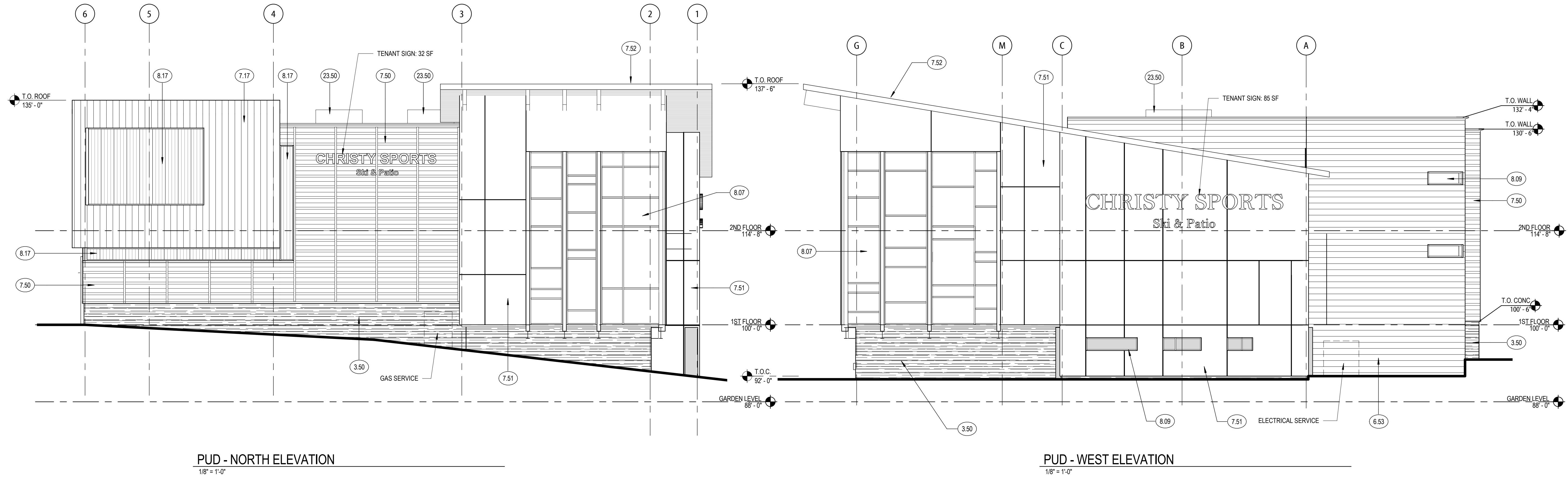


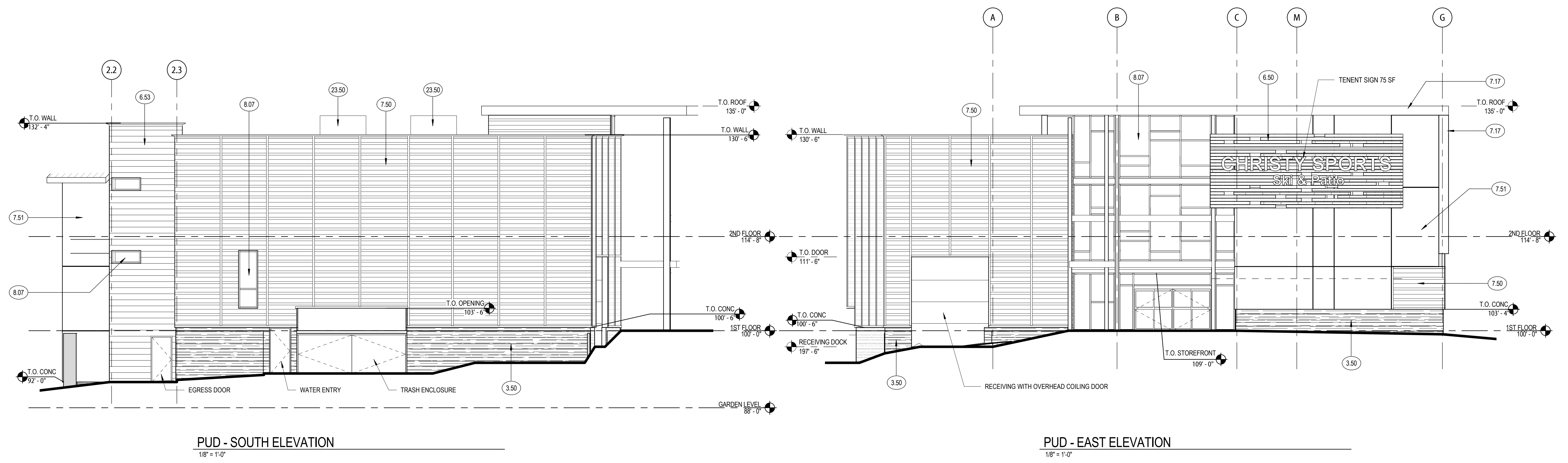
KEYNOTE LEGEND

3.50	BOARD FORMED CONCRETE
6.50	COMPOSITE WOOD DECKING
6.53	CEDAR LAP SIDING, WD-3
7.17	WEATHERED STEEL ROOFING
7.50	HARDIEPLANK FIBER CEMENT SIDING WITH VERTICAL BATTEN - VARIED EXPOSURE HARDIE LAP SIDING, 4, 6, 8, AND 12 INCH EXPOSURES, FCP-1
7.51	STUCCO
7.52	SHEET METAL ROOFING STANDING SEAM
8.07	ALUMINUM FRAMED STOREFRONT
8.09	ALUMINUM FRAME WINDOW, TYP
8.17	TRANSLUCENT ASSEMBLIES (KALWALL)
23.50	ROOFTOP MECHANICAL UNIT



PUD - NORTH ELEVATION  
 1/8" = 1'-0"

PUD - WEST ELEVATION  
 1/8" = 1'-0"



PUD - SOUTH ELEVATION  
 1/8" = 1'-0"

PUD - EAST ELEVATION  
 1/8" = 1'-0"

**CHRISTY SPORTS - DILLON**  
 817 DILLON ROAD LLC  
 817 US-67, DILLON, CO 80435



© COPYRIGHT RTA, INC.

SHEET TITLE  
**EXHIBIT C - ELEVATIONS**

RTA PROJECT NUMBER  
**14093.00**

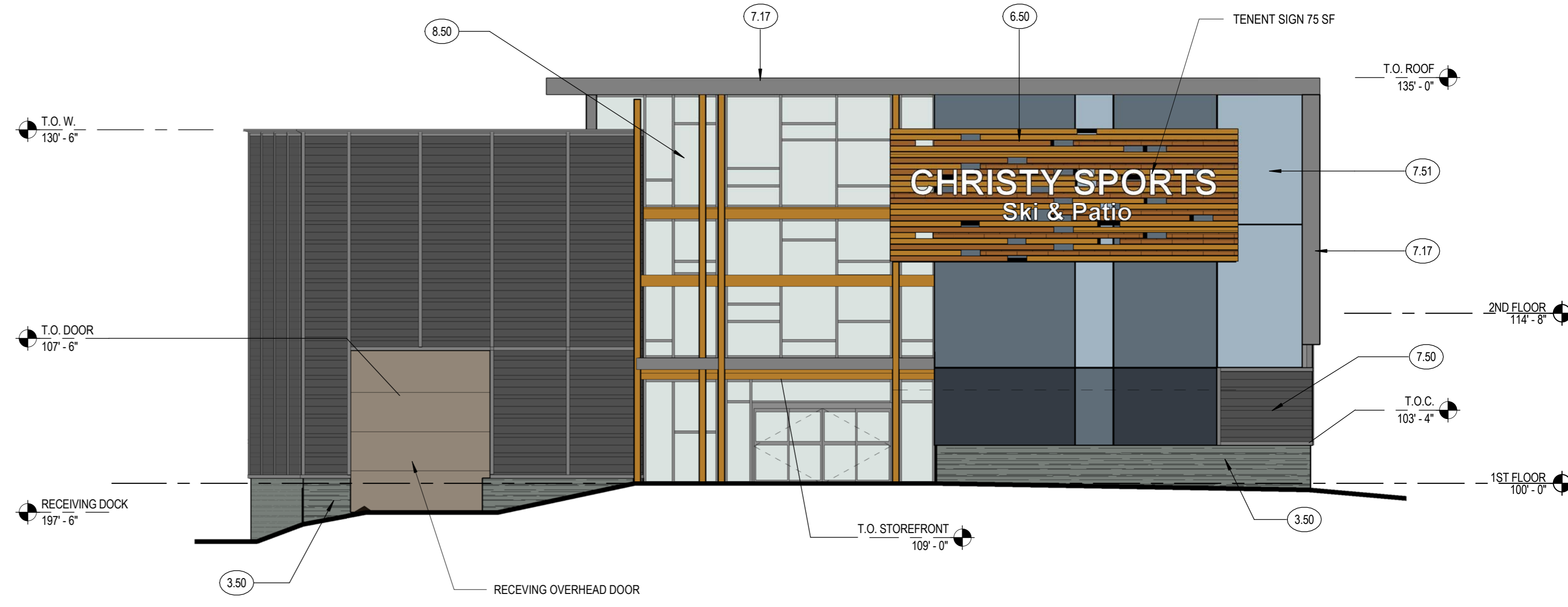
DATE  
**08.16.2017**

#	DATE	DESCRIPTION

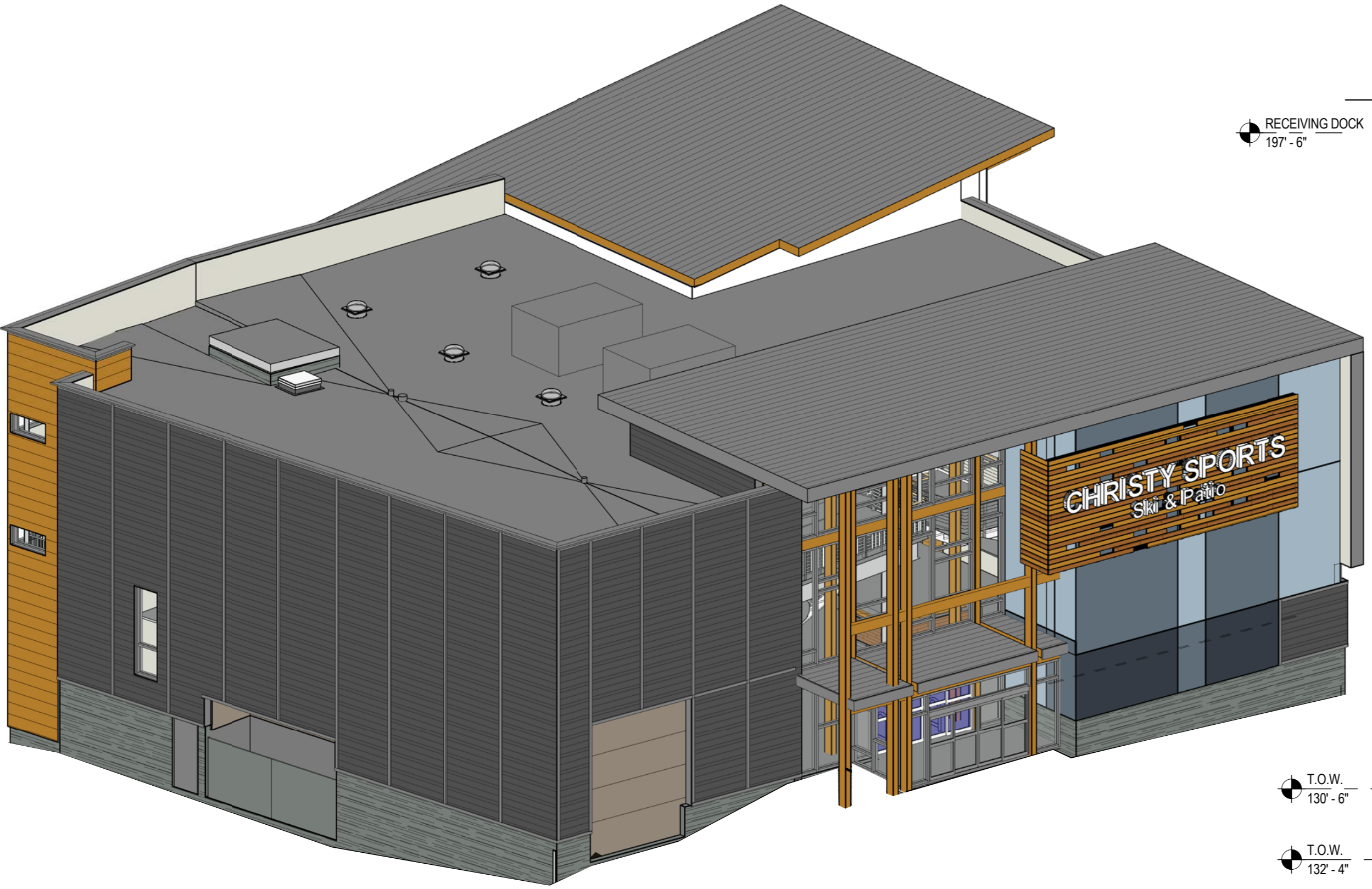
ISSUED FOR:  
**PUD SUBMITTAL**

SHEET NO.  
**C.1**

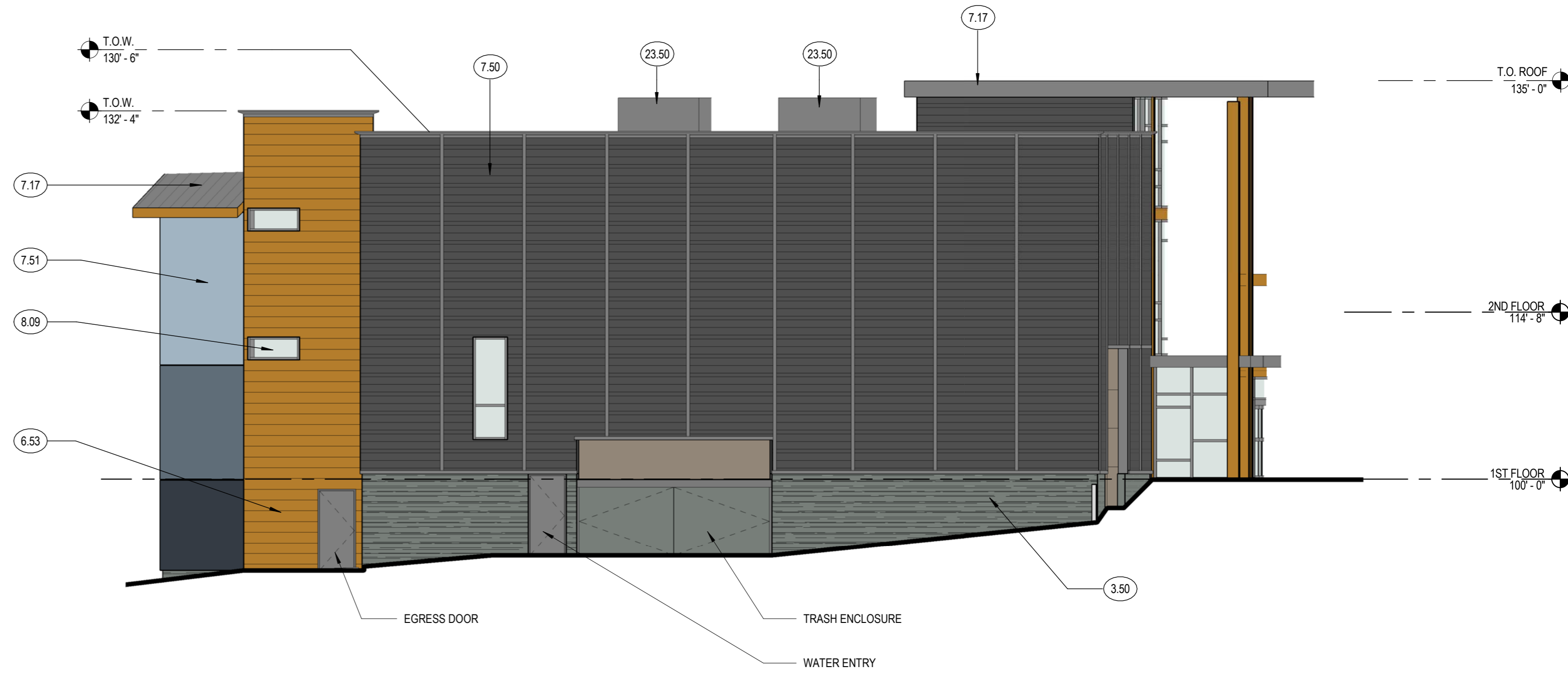
**EXHIBIT C**



**EAST ELEVATION**  
 1/8" = 1'-0"



**AXONOMETRIC - SOUTHEAST CORNER**



**SOUTH ELEVATION**  
 1/8" = 1'-0"

KEYNOTE LEGEND

3.50	BOARD FORMED CONCRETE
6.53	CEDAR LAP SIDING, WD-3
7.17	WEATHERED STEEL ROOFING
7.50	HARDIEPLANK FIBER CEMENT SIDING WITH VERTICAL BATTEN - VARIED EXPOSURE HARDIE
7.51	LAP SIDING, 4, 6, 8, AND 12 INCH EXPOSURES, FCP-1
7.52	STUCCO
8.09	SHEET METAL ROOFING STANDING SEAM
8.09	ALUMINUM FRAME WINDOW, TYP.
8.17	TRANSLUCENT ASSEMBLIES (KALWALL)
8.50	GLU-LAM COLUMNS AND BEAMS WITH ALUMINUM CURTAINWALL
23.50	ROOFTOP MECHANICAL UNIT

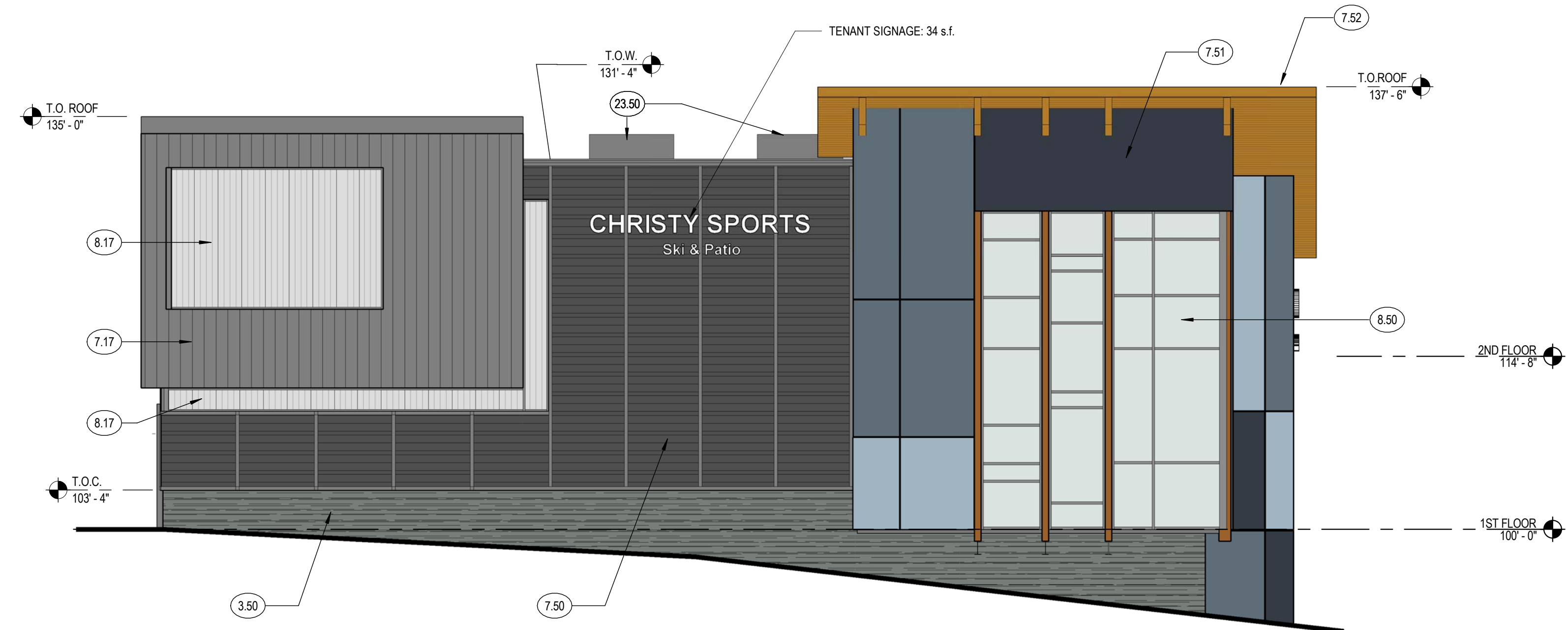


AXONOMETRIC - NORTHWEST CORNER



WEST ELEVATION

1/8" = 1'-0"



NORTH ELEVATION

1/8" = 1'-0"

CHRISTY SPORTS - DILLON

817 DILLON ROAD LLC  
 817 US-67, DILLON, CO 80435



© COPYRIGHT RTA, INC.

SHEET TITLE  
**EXHIBIT C - AXON. AND ELEVATIONS**  
 RTA PROJECT NUMBER  
**14093.00**

DATE  
**08.16.2017**

REVISIONS	
#	DESCRIPTION

DWG: DJA  
 DRAWN BY: CMM  
 CHECKED BY: PAW

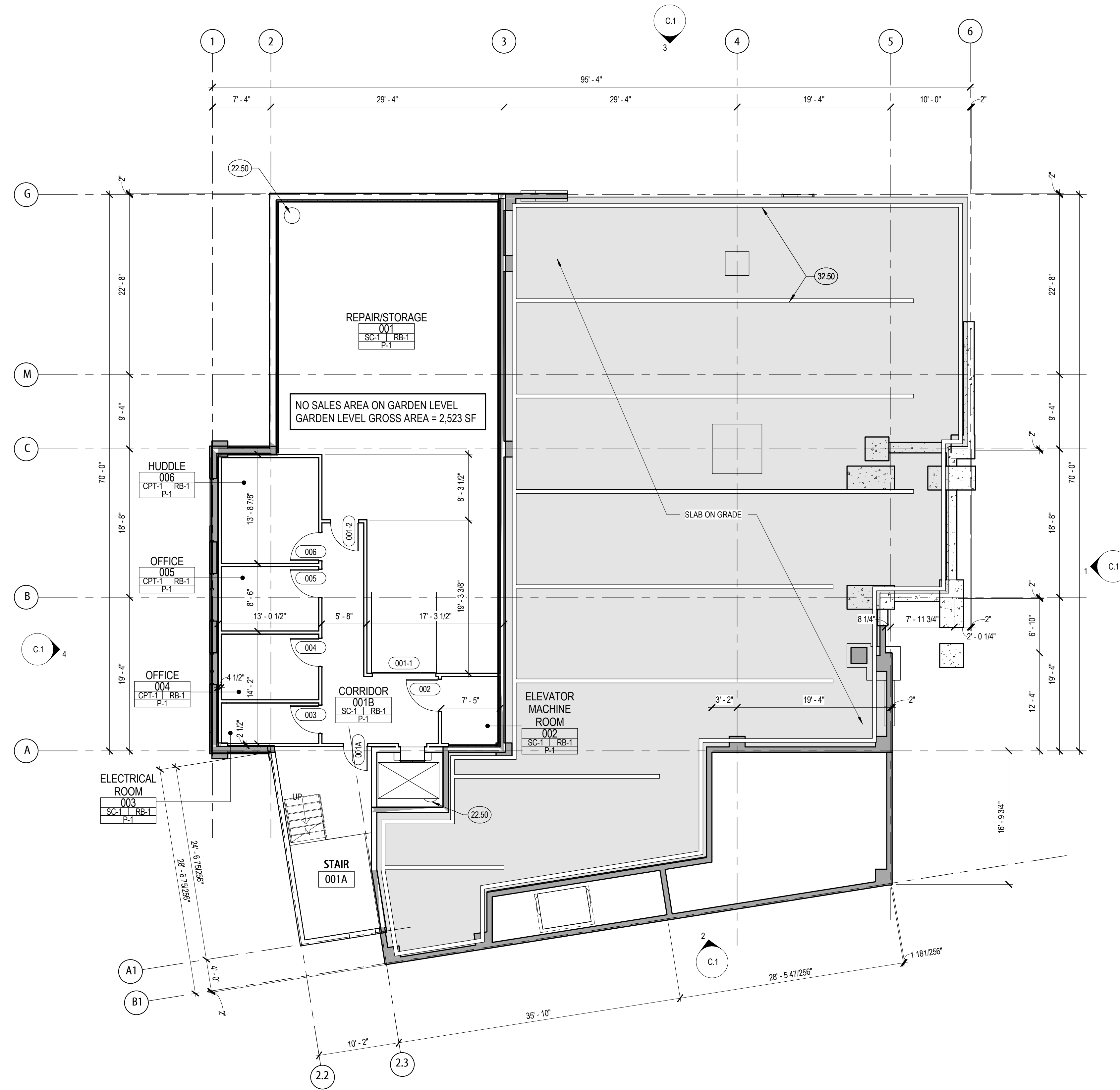
ISSUED FOR:  
**PUD SUBMITTAL**

SHEET NO.  
**C.3**

EXHIBIT C



19 SOUTH TEJON ST., SUITE 300  
 COLORADO SPRINGS, CO. 80903  
 TELE. 719-471-7566  
 FAX: 719-471-1174  
 www.rtaarchitects.com



CHRISTY SPORTS - DILLON

817 DILLON ROAD LLC  
 817 US-67, DILLON, CO 80435



© COPYRIGHT RTA, INC.

SHEET TITLE  
**EXHIBIT C - GARDEN LEVEL FLOOR PLAN**  
 RTA PROJECT NUMBER  
**14093.00**  
 DATE  
**08.16.2017**

#	DATE	DESCRIPTION

ISSUED FOR:  
**PUD SUBMITTAL**  
 SHEET NO.  
**C.4**



GARDEN LEVEL PLAN  
 1/8" = 1'-0"

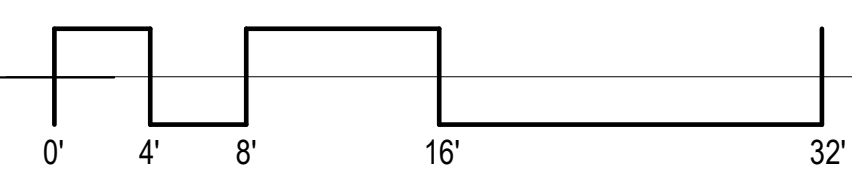


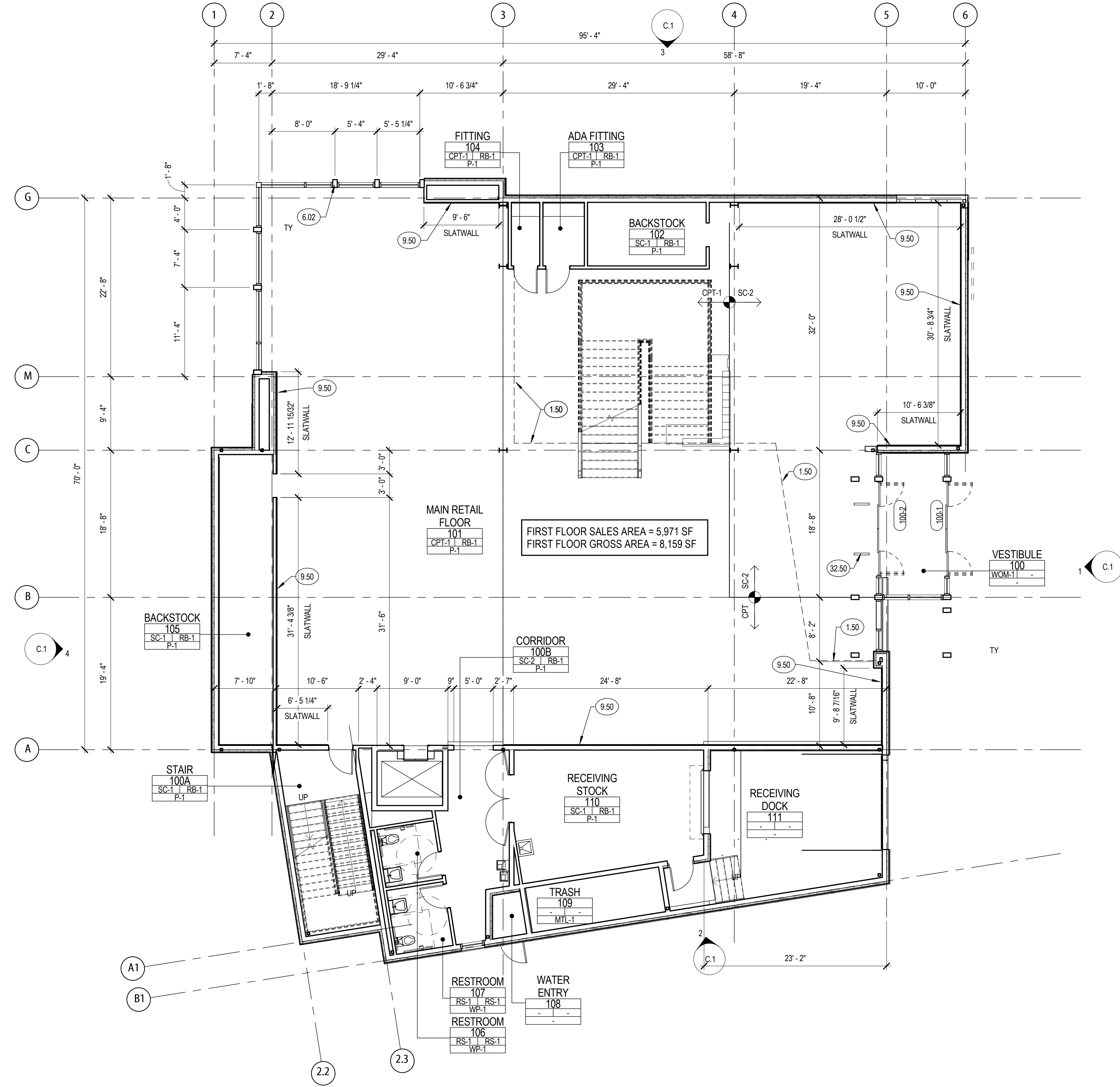
EXHIBIT C

KEYNOTE LEGEND

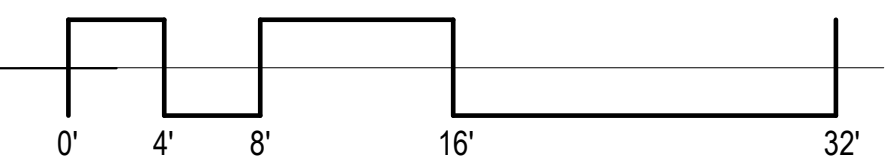
1.50	LINE OF FLOOR ABOVE
6.02	HEAVY TIMBER (BEAM, COLUMN) RE: STRUCTURAL, WD-1
9.50	SLATWALL, 2'-0" A.F.F. TO 10'-0" A.F.F.; RE: FINISH PLAN AND SCHEDULE
32.50	UNDER SLAB INTERIOR DRAIN



19 SOUTH TEJON ST., SUITE 300  
 COLORADO SPRINGS, CO. 80903  
 TELE: 719-471-7566  
 FAX: 719-471-1174  
 www.rtaarchitects.com



**FIRST FLOOR PLAN**  
 1/8" = 1'-0"



**CHRISTY SPORTS - DILLON**

**817 DILLON ROAD LLC**  
 817 US-67, DILLON, CO 80435



© COPYRIGHT RTA, INC.

**EXHIBIT C - FIRST FLOOR PLAN**

RTA PROJECT NUMBER  
**14093.00**  
 DATE  
**08.16.2017**

#	DATE	DESCRIPTION
---	------	-------------

DWG: **DJA**  
 DRAWN BY: **CMM**  
 CHECKED BY: **PAW**

ISSUED FOR:  
**PUD SUBMITTAL**

SHEET NO.  
**C.5**

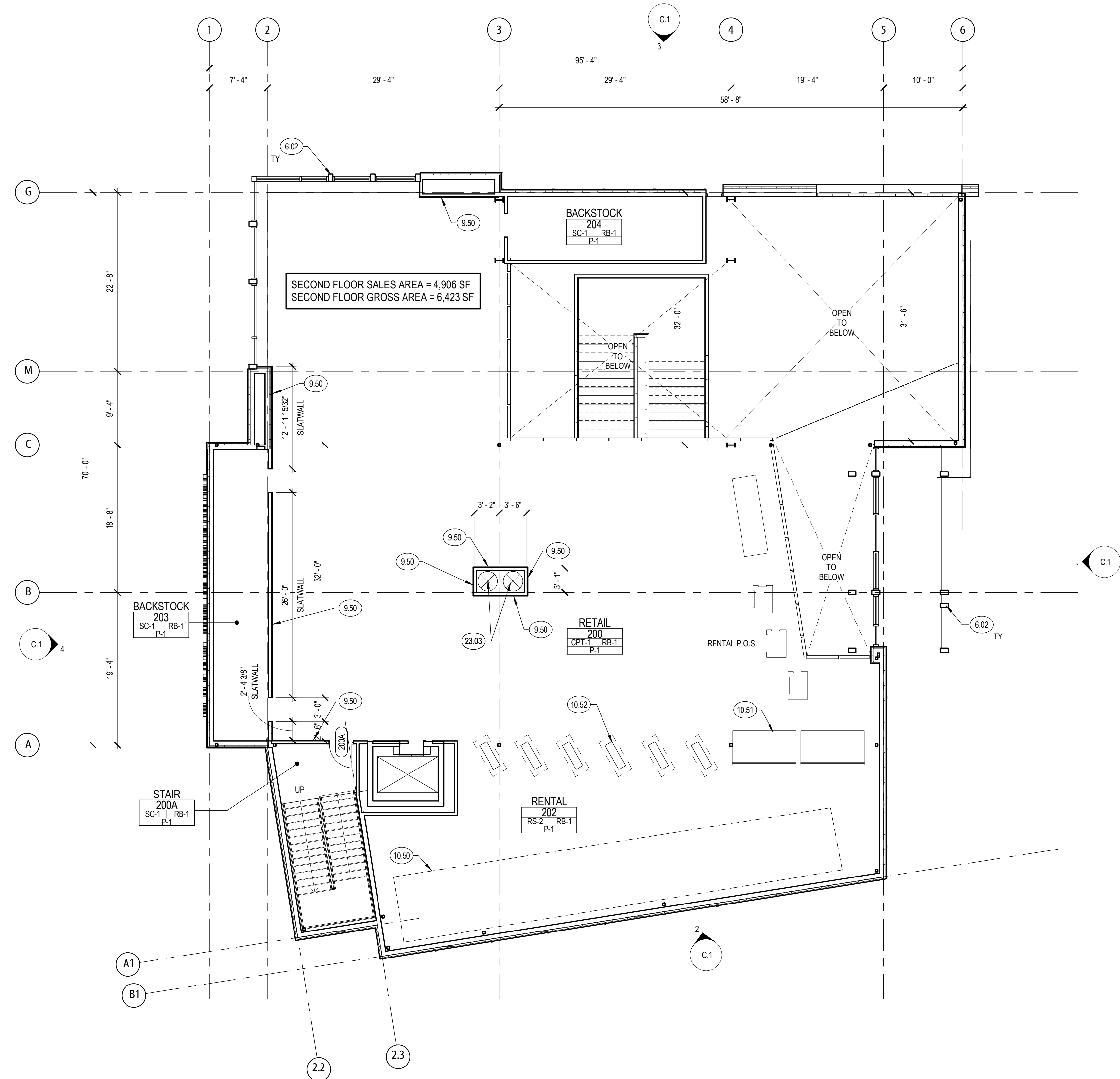
**EXHIBIT C**

KEYNOTE LEGEND

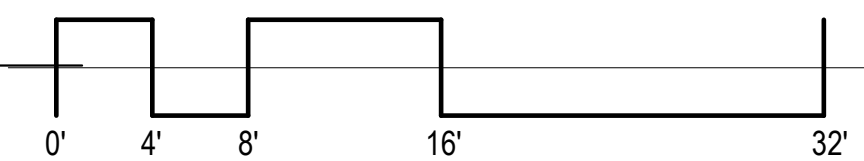
6.02	HEAVY TIMBER (BEAM, COLUMN) RE: STRUCTURAL, WD-1
9.50	SLATWALL, 2'-0" A.F.F. TO 10'-0" A.F.F.; RE: FINISH PLAN AND SCHEDULE
10.50	HIGH DENSITY STORAGE
10.51	BOOT FITTING STATION
10.52	CRANKING STATION
23.03	METAL DUCT WORK



19 SOUTH TEJON ST., SUITE 300  
 COLORADO SPRINGS, CO. 80903  
 TELE: 719-471-7566  
 FAX: 719-471-1174  
 www.rtaarchitects.com



SECOND FLOOR PLAN  
 1/8" = 1'-0"



CHRISTY SPORTS - DILLON

817 DILLON ROAD LLC  
 817 US-67, DILLON, CO 80435



© COPYRIGHT RTA, INC.

SHEET TITLE  
**EXHIBIT C - SECOND FLOOR PLAN**  
 RTA PROJECT NUMBER  
**14093.00**  
 DATE  
**08.16.2017**

#	DATE	DESCRIPTION

DWG: DJA  
 DRAWN BY: CMM  
 CHECKED BY: PAW

ISSUED FOR:  
**PUD SUBMITTAL**

SHEET NO.  
**C.6**

EXHIBIT C